

MAK
ARCHITECTURE
MANUFACTURING | CONTRACTS



STAINLESS STEEL
Plumbing Pipes
Press Fittings

CATALOG 2023
mak-india.com



**"Quality means
doing it right
when no one is
looking."
~Henry Ford**

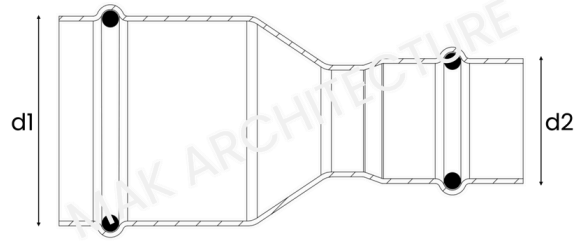


MAK Architecture has been designing, producing and marketing a wide range of products for the sanitary and industrial segment, including stainless steel fittings.

The aim of the company is the customer satisfaction, trying to give the best quality – price combination in more than 4,000 references, specially made for the professional distributor.

With a nice market presence, MAK is positioned as one of the most complete companies in integral solutions for the conduction of fluids, key segment for the industrial sector, water and irrigation treatments, hydrosanitary uses etc.

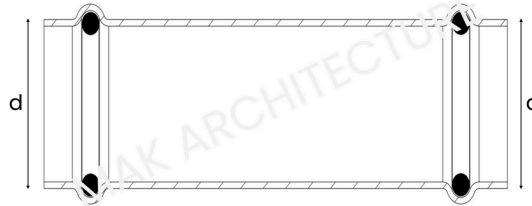
Nowadays, MAK has a network of its own distributors in more than 10 states, a subsidiary in Canada, New Zealand and Germany.



REDUCER

Sizes in mm (d1 x d2)

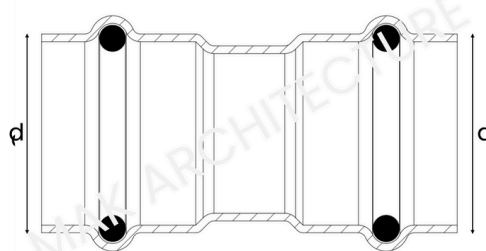
20 x 15	25 x 15	25 x 20	30 x 15	30 x 20	30 x 25	40 x 15	40 x 20	40 x 25	40 x 30
50 x 15	50 x 20	50 x 25	50 x 30	50 x 40	60 x 15	60 x 20	60 x 25	60 x 30	60 x 40



BARE
SOCKET

Sizes in mm (d)

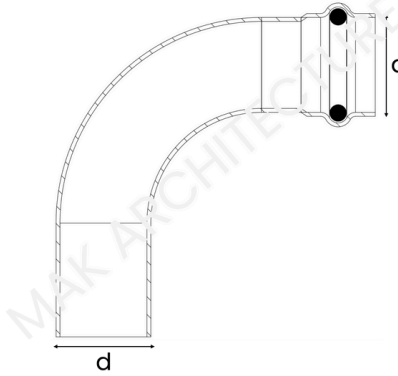
15	20	25	30	40	50	60
----	----	----	----	----	----	----



SOCKET

Sizes in mm (d)

15	20	25	30	40	50	60
----	----	----	----	----	----	----



**90° SOCKET
ELBOW**

15

20

Sizes in mm (d)

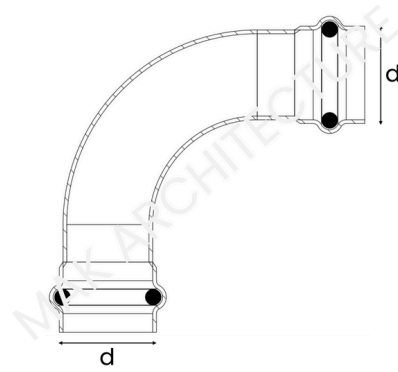
25

30

40

50

60



**90°
ELBOW**

15

20

Sizes in mm (d)

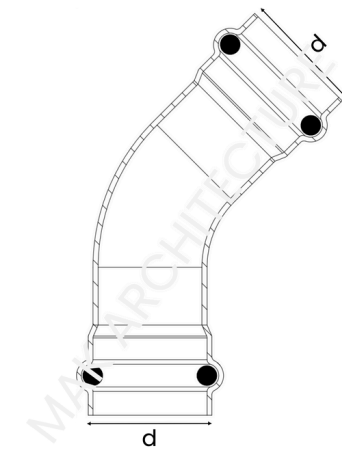
25

30

40

50

60



**45°
ELBOW**

15

20

Sizes in mm (d)

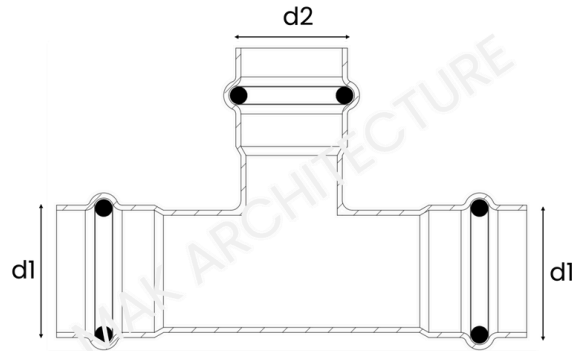
25

30

40

50

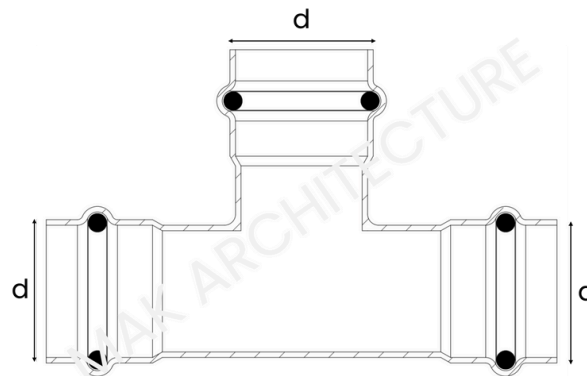
60



**REDUCING
TEE**

Sizes in mm

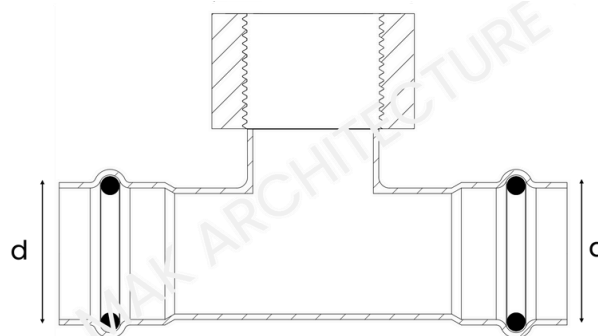
20 x 15	25 x 15	25 x 20	30 x 15	30 x 20	30 x 25	40 x 15	40 x 20	40 x 25	40 x 30
50 x 15	50 x 20	50 x 25	50 x 30	50 x 40	60 x 15	60 x 20	60 x 25	60 x 30	60 x 40



**EQUAL
TEE**

Sizes in mm(d)

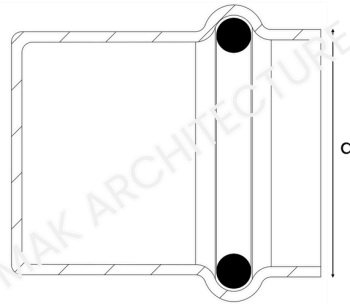
15	20	25	30	40	50	60
----	----	----	----	----	----	----



**FEMALE
TEE
ADAPTOR**

Sizes in mm (d)

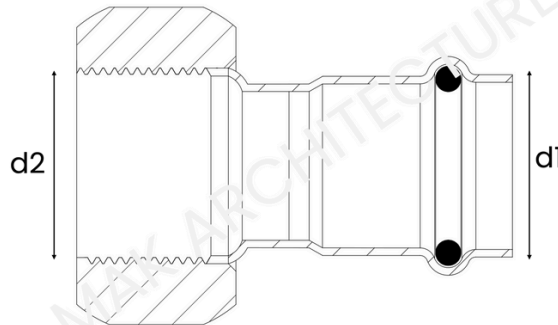
15	20	25	30	40	50	60
----	----	----	----	----	----	----



CAP

Sizes in mm (d)

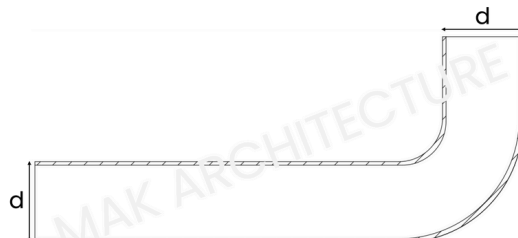
15 20 25 30 40 50 60



ADAPTOR
SOCKET
FEMALE

Sizes in mm (d1 x d2)

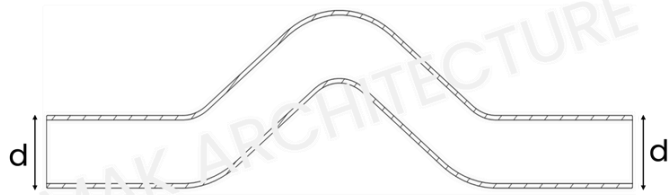
15 x 1/2"	20 x 1/2"	20 x 3/4"	25 x 1"	30 x 1"	30 x 1 1/4"
40 x 1 1/4"	40 x 1 1/2"	50 x 1 1/2"	50 x 2"	60 x 2"	60 x 2 1/2"



15° TO 90°
PLAIN ENDS

Sizes in mm (d)

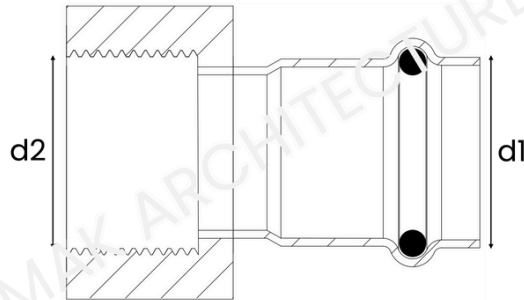
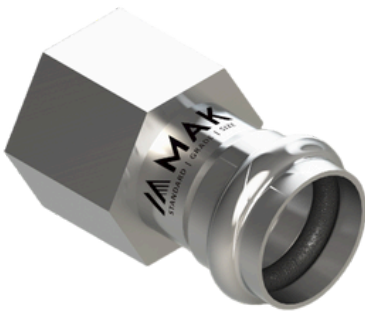
15 20 25 30 40 50 60



CROSSOVER

Sizes in mm (d)

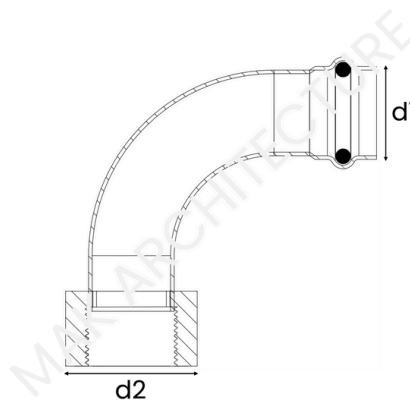
15 20 25 30 40 50 60



FTA

Sizes in mm (d1 x d2)

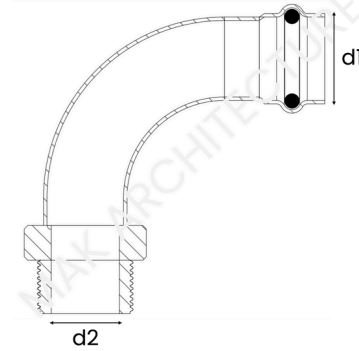
15 x 1/2" 22 x 1/2" 22 x 3/4" 28 x 1" 35 x 1 1/4" 42 x 1 1/2" 54 x 2



WATER
ELBOW
FEMALE

Sizes in mm (d1 x d2)

15 x 1/2" 20 x 1/2" 20 x 3/4" 25 x 1



**WATER
ELBOW
MALE**

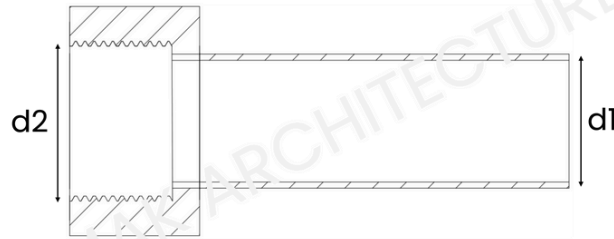
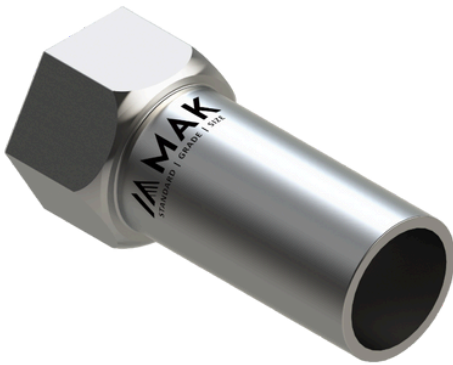
Sizes in mm (d1 x d2)

15 x 1/2"

20 x 1/2"

20 x 3/4"

25 x 1"



**FTA
PLAIN END**

Sizes in mm (d1 x d2)

15 x 1/2"

22 x 1/2"

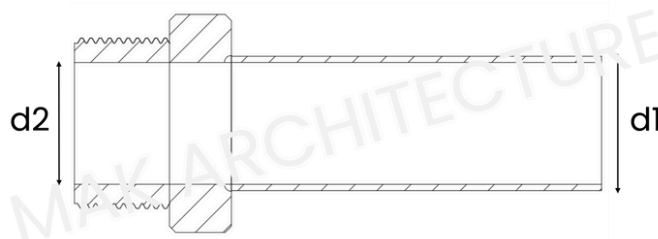
22 x 3/4"

28 x 1"

35 x 1 1/4"

42 x 1 1/2"

54 x 2"



**MTA
PLAIN END**

Sizes in mm

15 x 1/2"

22 x 1/2"

22 x 3/4"

28 x 1"

35 x 1 1/4"

42 x 1 1/2"

54 x 2"



PIPE

EN 10312 (Sizes in mm)

15	18	22	28	35	42	54	76.1	88.9	108
1	1	1.2	1.2	1.5	1.5	2	2	2	2

JIS 3448 (Sizes in mm)

15.88	22.22	28.58	34.00	42.70	48.60	60.50	76.30	89.10	114.30
0.80	1.00	1.00	1.20	1.20	1.20	1.50	1.50	2.00	2.00

- The press tool must match the geometry of the fitting.
- Press tools are available in electro-hydraulic and electromechanical (including battery-powered) versions.
- Interchangeable jaws are available for the press tools.
- Suitable tube cutter and bending tools are available to cut and form stainless steel plumbing tube.



TRUSTED BY



Head Office & Works:
MAK Architecture,
Vill Bihta, Bihta Road, Saha Industrial Area,
District Ambala, Haryana (INDIA)
www.mak-india.com
info@mak-india.com